

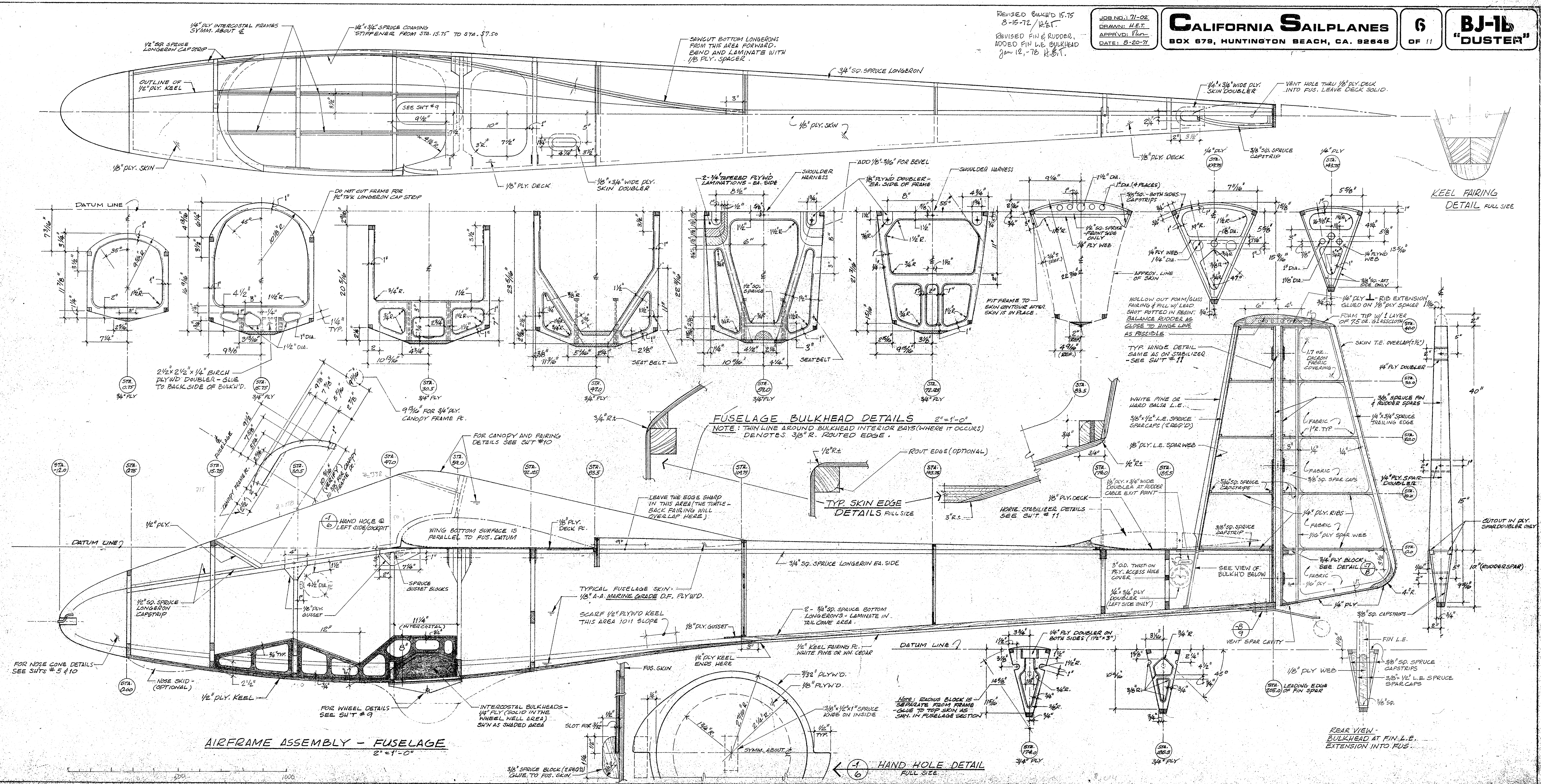
JOB NO.: 71-02
 DRAWN: H.E.T.
 APPROV: P.M.
 DATE: 8-20-71

CALIFORNIA SAILPLANES
 BOX 678, HUNTINGTON BEACH, CA. 92648

6 OF 11

BJ-16 "DUSTER"

REVISED BULKHEAD 15.75
 8-15-72 / H.E.T.
 REVISED FIN & RUDDER,
 ADDED FIN L.E. BULKHEAD
 Jan 12, 76 R.B.T.



AIRFRAME ASSEMBLY - FUSELAGE
 2" = 1'-0"

FUSELAGE BULKHEAD DETAILS
 2" = 1'-0"
 NOTE: THIN LINE AROUND BULKHEAD INTERIOR BAYS (WHERE IT OCCURS) DENOTES 3/8" R. ROUTED EDGE.

KEEL FAIRING
 DETAIL FULL SIZE

REAR VIEW - BULKHEAD AT FIN L.E. EXTENSION INTO FUS.

HAND HOLE DETAIL
 FULL SIZE

FOR NOSE CONE DETAILS SEE SHTS # 5 & 10

FOR WHEEL DETAILS SEE SHIT # 9

INTERCOSTAL BULKHEADS - 1/4" PLY (SOLID IN THE WHEEL WELL AREA) SHN AS SHADED AREA

TYPICAL FUSELAGE SKIN - 1/8" A-A MARINE GRADE D.F. PLY W/D.

LEAVE THE EDGE SHARP IN THIS AREA (THE TURTLE - BACK FAIRING WILL OVERLAP HERE).

HOLLOW OUT FOAM/GLASS FAIRING & FILL W/ LEAD SHOT POTTED IN RESIN. BALANCE RUDDER AS CLOSE TO HINGE LINE AS POSSIBLE.

TYP. HINGE DETAIL - SAME AS ON STABILIZER - SEE SHIT # 11

WHITE PINE OR HARD BALS A L.E.

3/8" x 1/2" L.E. SPRUCE SPARCAPS (2 REQ'D)

1/8" PLY L.E. SPARWEB

1/8" PLY DECK

HORIE. STABILIZER DETAILS SEE SHIT # 11

5" O.D. THUST-ON PLY ACCESS HOLE COVER

1/4" x 3/4" WIDE DOUBLER AT RUDDER CABLE EXIT POINT

1/4" PLY DOUBLER (LEFT SIDE ONLY)

1/4" PLY DOUBLER ON BOTH SIDES (1/2" x 3")

1/8" PLY WEB

3/8" SQ. SPRUCE CAPSTRIPS

3/8" x 1/2" L.E. SPRUCE SPARCAPS

3/8" SQ.

1.7 OZ. CARBON FABRIC COVERING

1/4" PLY DOUBLER

3/8" SPRUCE FIN & RUDDER SPARS

1/4" x 3/4" SPRUCE TRAILING EDGE

FABRIC 1" R. TYP.

3/8" SQ. SPARCAPS

1/4" PLY SPAR DOUBLER

1/4" PLY SPARWEB

3/4" PLY BLOCK - BEE DETAIL (7)

1/4" PLY

3/8" SQ. CAPSTRIPS

1/8" PLY WEB

3/8" SQ. SPRUCE CAPSTRIPS

3/8" x 1/2" L.E. SPRUCE SPARCAPS

3/8" SQ.

CUTOUT IN PLY SPAR DOUBLER ONLY

10" (RUDDERSPAR)

4" R.

9 3/4"

2"

15"

40"

5"

2"

1"

1"

1"

1"

1"

1"

1"

1"

1"

1"

1"

1"

1"

1"

1"

1"

1"

1"

1"

1"

1"

1"

1"

1"

1"

1"

1"

1"

1"

1"

1"

1"

1"

1"

1"

1"

1"

1"

1"

1"

1"

1"

1"

1"

1"

1"

1"

1"

1"

1"

1"

1"

1"

1"

1"

1"

1"

1"

1"

1"

1"

1"

1"

1"

1"

1"

1"

1"